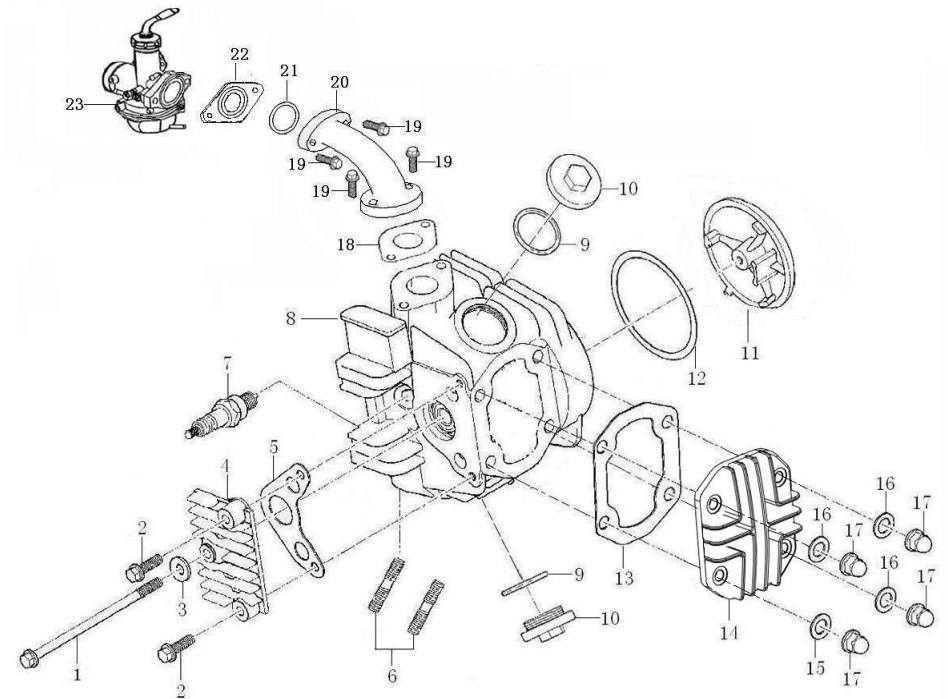


气缸头部件 CYLINDER HEAD ASSY

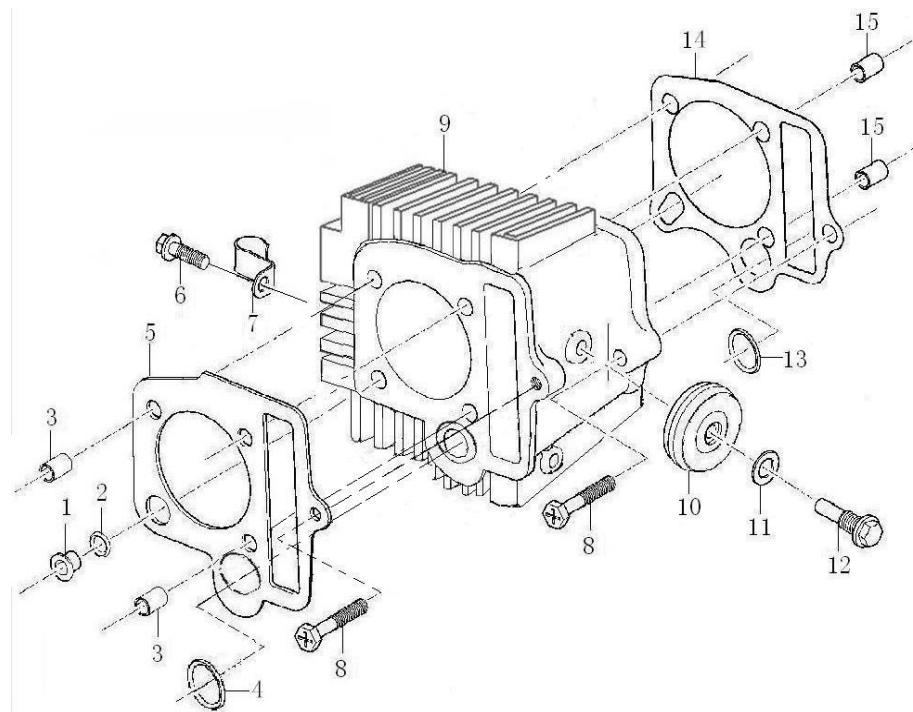
序号 NO.	编码 (PART CODE)	中文名称 (CHINESE DESCRIPTION)	英文名称 (ENGLISH DESCRIPTION)	数量 QTY	备注 REMARK
1	100100492-0007	70缸头左右盖连接螺栓M6×110(兰白锌)	Bolt, M6×110	1	
2	100055588-0006	GB16674小盘螺栓M6×20(兰白锌)	Bolt, M6×20	2	
3	100106540	平垫圈(φ6.5×1×φ12)	Washer, φ6.5×1×φ12	1	
4	100205654-0003	70缸头右盖组合(抛丸钝化)	Right Cover Cylinder Head	1	
5	100104542	70气缸头右盖密封垫	Gasket R.Cylinder Head Cover	1	
6	100100441-0005	GY6缸头排气口双头螺栓M6×32(兰白锌)	Bolt, M6×32	2	
7	100104126	C100火花塞部件(A7TC)	Spark Plug	1	
8	100207734-0002	70改50脚气缸头组合(抛丸钝化)	Cylinder Head Assy	1	
9	100107741	O型圈(φ29.6×3.2 氟硅胶)	O-Ring, φ29.6×3.2	2	
10	100102869-0003	70气门室盖(抛丸钝化)	Cover Valve Chamber	2	
11	100205634-0002	70缸头左盖(3# 限位柱高度11.3 抛光)	Breather Hose	1	
12	100104539	70气缸头左盖密封垫	Gasket L Cylinder Head Cover	1	
13	100104538	70气缸头上盖密封垫	Gasket Cylinder Head Upper Cover	1	
14	100205585-0003	70缸头上盖(抛丸钝化)	Upper Cover Cylinder Head	1	
15	100106565	平垫圈(φ6.2×2×φ13)	Washer, φ6.2×2×φ13	1	
16	100106337	平垫圈(φ6.2×2×φ13 兰白锌)	Washer, φ6.2×2×φ13	3	
17	100100506-0006	C110-B缸头盖盖形螺母M6(兰白锌)	Nut M6	4	
18	100105366	100进气管密封垫	Gasket Inlet Pipe	1	
19	100011176-0001	GB5783螺栓M6×30(兰白锌)	Bolt, M6×30	4	
20	100200741	70进气管(JQ-1 抛丸钝化)	Inlet Pipe	1	
21	100107727	O型圈(φ25×2.4 丁腈胶)	O-Ring, φ25×2.4	1	
22	100208760	70化油器隔热垫	Gasket Carburetor	1	
23	100300063	70改50电化油器(PZ16 手动)	Carburetor	1	



气缸头部件
CYLINDER HEAD ASSY

气缸体部件 CYLINDER ASSEMBLY

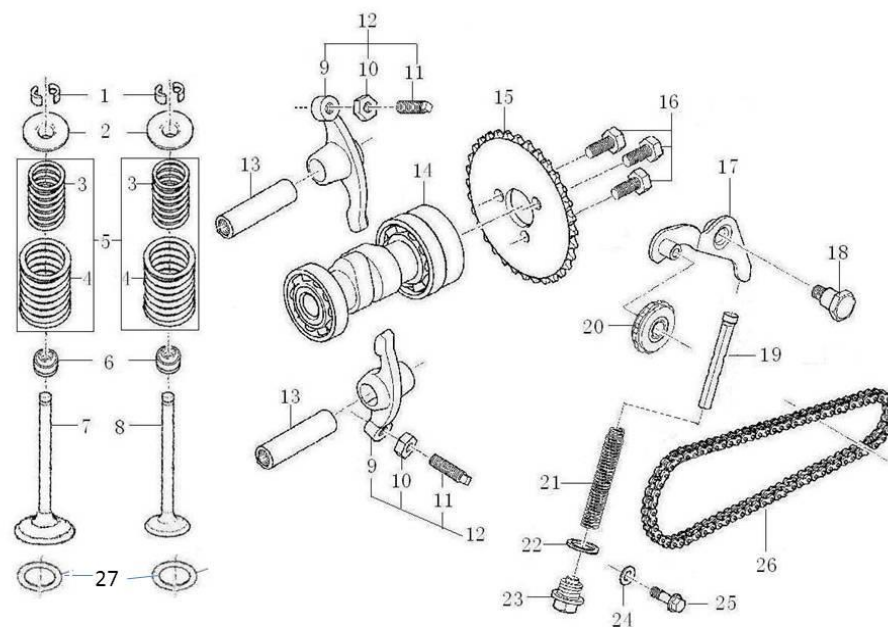
序号 NO.	编码 (PART CODE)	中文名称 (CHINESE DESCRIPTION)	英文名称 (ENGLISH DESCRIPTION)	数量 QTY	备注 REMARK
1	100102874	70反沿衬套9.5	Bush 9.5	1	
2	100104509	70矩形密封圈(φ8×10.8×1.5)	Rectangle Ring, 8×10.8×1.5	1	
3	100100868	定位销 φ8×14×φ6.3	Dowel Pin, φ8×14×φ6.3	2	
4	100104511	70矩形密封圈(φ14×18.2×2.5)	Rectangle Ring, 14×18.2×2.5	1	
5	100208806	70改50脚气缸头密封垫组合	Gasket Assy Cylinder Head	1	
6	100055589-0006	GB16674小盘螺栓M6×16(兰白锌)	Bolt, M6×16	1	
7	100100000-0005	70高压线固定夹(兰白锌)	Clip High Voltage Wire	1	
8	100100382-0007	70缸体箱体连接螺栓M6×23(兰白锌)	Bolt, M6×23	2	
9	100207278-0001	70改50脚气缸体部件(缸标48 铸铁 电泳黑)	Cylinder Block Assembly	1	
10	100200331	C110链条导向轮组合(45 全橡胶)	Guide Chain Roller Set	1	
11	100106544	平垫圈(φ8×1.5×φ14)	Washer, φ8×1.5×φ14	1	
12	100105066-0006	70导向滚轮销轴(兰白锌)	Guide Chain Roller Pin	1	
13	100104510	70矩形密封圈(φ11.5×16×2.5)	Rectangle Ring, 11.5×16×2.5	1	
14	100208546	70气缸体密封垫	Gasket Cylinder Block	1	
15	100100867	定位销 φ8×12×φ6.3	Dowel Pin, φ8×12×φ6.3	2	



气缸体部件
CYLINDER ASSEMBLY

配气机构 VALVE MECHANISM

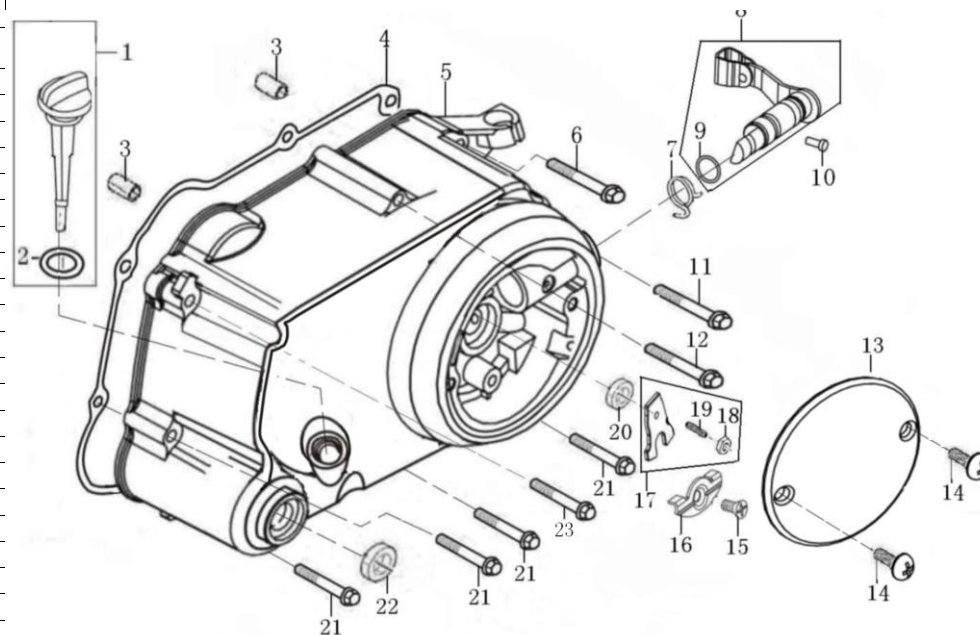
序号 NO.	编码 (PART CODE)	中文名称 (CHINESE DESCRIPTION)	英文名称 (ENGLISH DESCRIPTION)	数量 QTY	备注 REMARK
1	100105320	70气门锁夹	Valve Locker	4	
2	100105305	70气门弹簧座(上)	SpRing, Seat	2	
3	100200681	W140气门内弹簧	Valve Inner Spring	2	
4	100200667	W140气门外弹簧	Valve Outer Spring	2	
5	100200724	W140气门内外弹簧组合	Inner SpRing, Assy	2	
6	100105334	70挡油罩组合	Seal Valve Stem	2	
7	100200567	70改50脚进气门	Intake Valve	1	
8	100200613	70改50脚排气门	Exhaust Valve	1	
9	100105142	70气门摇臂	Rocker Arm	2	
10	100105156	70气门间隙调节螺母	Nut Valve Clearance	2	
11	100105167	70气门间隙调节螺钉	Screw, Valve Clearance	2	
12	100105179	70气门摇臂组合	Rocker Arm Assembly Valve	2	
13	100105148	70气门摇臂轴	Rocker Shaft	2	
14	100200097	70改50脚凸轮轴部件(轴承16003_16002)	Gamp Shaft Comp	1	
15	100105026	70正时从动链轮	Timing Driven Sprocket	1	
16	100100487	70正时链轮螺栓M5×12	Bolt, M5×12	3	
17	100105256	70链条张紧臂组合	Chain Adjusting Set	1	
18	100105207	70链条张紧臂芯轴	Axle Tensioner Lever	1	
19	100105253	70链条张紧杆组合	Cam Chain Tensioner Push Rod	1	
20	100105239	70链条张紧轮组合	Plug Of Tightener	1	
21	100105204	70链条张紧杆弹簧	Spring	1	
22	100106552	平垫圈(φ14×1.5×φ20)	Washer, φ14×1.5×φ20	1	
23	100100343-0007	70密封螺塞M14×1.5(兰白锌)	Sealing Plug M14×1.5	1	
24	100106538	平垫圈(φ6.2×1.5×φ13 铝)	Washer, φ6.2×1.5×φ13 铝	1	
25	100033099-0006	GB16674大盘螺栓M6×18(兰白锌)	Bolt, M6×18	1	
26	100105085	70正时链条组合(82)	Sproket Chain	1	
27	100105313	70气门外弹簧座圈(下)	Outer Valve SpRing, Retainer	2	



配气机构
VALVE MECHANISM

右曲轴箱盖 RIGHT CRANKCASE COVER

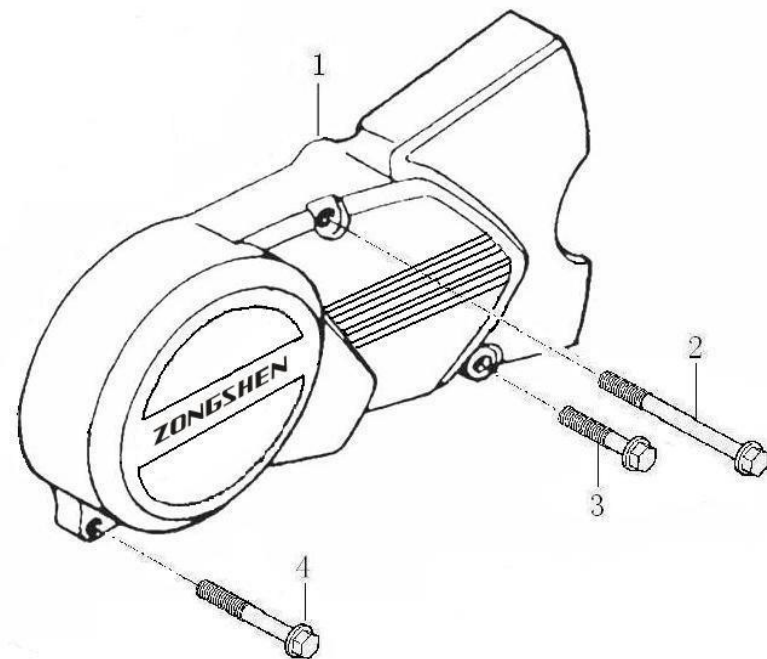
序号 NO.	编码 (PART CODE)	中文名称 (CHINESE DESCRIPTION)	英文名称 (ENGLISH DESCRIPTION)	数量 QTY	备注 REMARK
1	100104873	70机油尺组合(整体式 白板 本色)	Oil Ruler Assy	1	
2	100031573	0型圈(Φ18×3 丁腈胶)	O-Ring, Φ18×3	1	
3	100100867	定位销Φ8×12×Φ6.3	Dowel Pin, Φ8×12×Φ6.3	2	
4	100104568	70右曲轴箱盖密封垫	Gasket R. Crankcase Cover	1	
5	100202563-0011	90右盖组合(普通款 小右盖 白板 8801)	Cover Comp Right Crankcase	1	
6	100011545-0001	GB16674小盘螺栓M6×100(兰白锌)	Bolt, M6×100	1	
7	100203121-0006	70离合器操纵纵臂弹簧(兰白锌)	Clutch Controlling Arm Spring	1	
8	100203133-0006	70离合器操纵纵臂组件(兰白锌)	Controlling Arm Assembly Clutch	1	
9	100107672	0型圈(Φ14×1.5 丁腈胶)	O-Ring, Φ14×1.5	1	
10	100204715	70离合器操纵纵臂定位销	Clutch Lever Pin	1	
11	100031958-0007	GB16674小盘螺栓M6×55(兰白锌)	Bolt, M6×55	1	
12	100011543-0001	GB16674小盘螺栓M6×65(兰白锌)	Bolt, M6×65	1	
13	100206280-0014	70右装饰盖(小圆盖 ZONGSHEN 带徽标 8801)	Decorate Cover R. Crankcase Cover	1	
14	100031838-0005	GB820螺钉M5×12(兰白锌)	Screw, M5×12	2	
15	100111241-0002	GB819.2螺钉M6×12(兰白锌)	Screw, M6×12	1	
16	100203186	70离合器分离压板	Clutch Pressure Clip	1	
17	100203185	70离合器拨板组合	Clutch Shifting Plate	1	
18	100011421-0003	GB6170螺母M6(兰白锌)	Nut, M6	1	
19	100204660	70离合器调节螺钉M6×15	Bolt, M6×15	1	
20	100104750	70离合器推杆油封(12×21×4 丁腈胶)	Oil Seal 12×21×4	1	
21	100011538-0003	GB16674小盘螺栓M6×40(兰白锌)	Bolt, M6×40	4	
22	100104727	70启动轴油封(13.8×24×5 丁腈胶)	Oil Seal 13.8×24×5	1	
23	100033087-0006	GB16674小盘螺栓M6×42(兰白锌)	Bolt, M6×42	1	



右曲轴箱盖
RIGHT CRANKCASE COVER

左曲轴箱边盖 L. CRANKCASE COVER FRONT PART

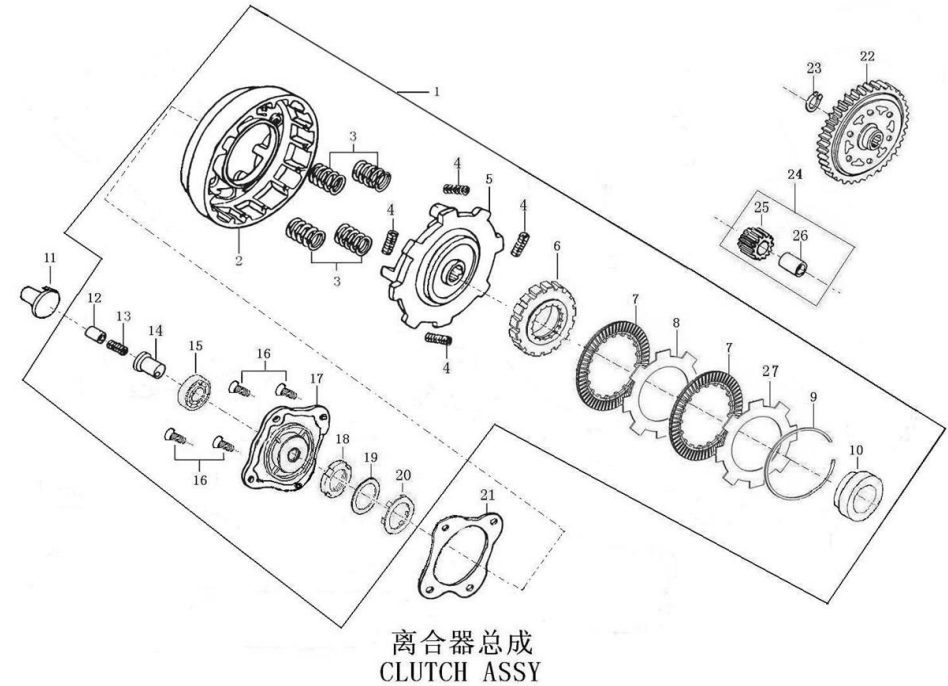
序号 NO.	编码 (PART CODE)	中文名称 (CHINESE DESCRIPTION)	英文名称 (ENGLISH DESCRIPTION)	数量 QTY	备注 REMARK
1	100202518-0009	90左边盖 (90-普通-2# ZONGSHEN 带凹框 8801)	L.Crankcase Cover Front Part	1	
2	100011537-0002	GB16674小盘螺栓M6×35 (兰白锌)	Bolt, M6×35	1	
3	100055587-0006	GB16674小盘螺栓M6×28 (兰白锌)	Bolt, M6×28	1	
4	100031957-0007	GB16674小盘螺栓M6×32 (兰白锌)	Bolt, M6×32	1	



左曲轴箱边盖
L. CRANKCASE COVER FRONT PART

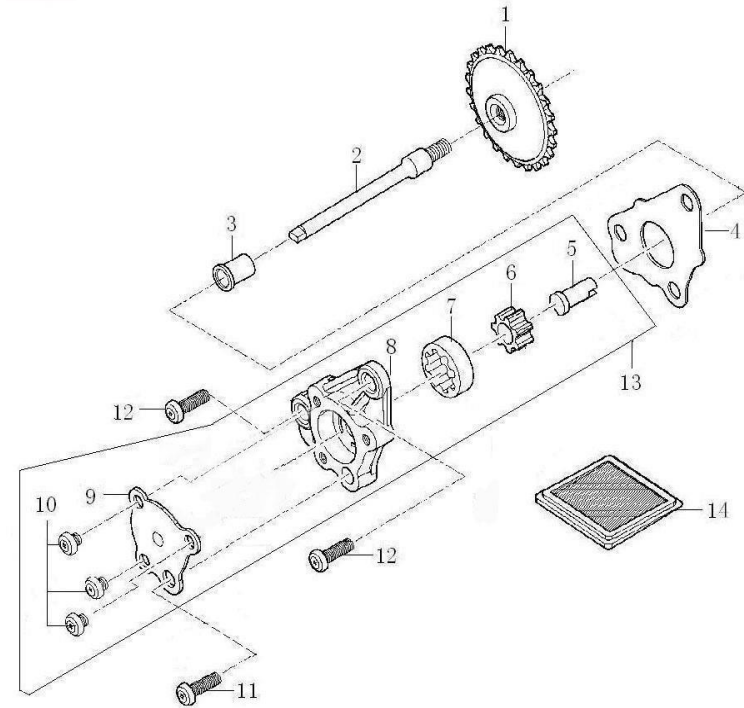
离合器总成 CLUTCH ASSY

序号 NO.	编码 (PART CODE)	中文名称 (CHINESE DESCRIPTION)	英文名称 (ENGLISH DESCRIPTION)	数量 QTY	备注 REMARK
1	100202755	70离合器总成	Clutch Assy	1	
2	100203014	70离合器外罩	Outer Case Clutch	1	
3	100202983	70离合器分离弹簧	Clutch Cut Spring	4	
4	100103399	70离合器减震弹簧	Absorbing Spring	4	
5	100202933	70离合器主动盘	Driver Plate	1	
6	100202968	70离合器主动齿轮外罩	Primary Drive Gear Outer Cover	1	
7	100203029	70离合器主动摩擦片	Drive Friction Disk	2	
8	100103379	70离合器下板	Clutch Down Plate	1	
9	100100599	70离合器挡圈	Elastic Check Ring	1	
10	100103382	70主动齿座圈衬套	Sleeve	1	附件
11	100103435	70离合器推杆	Pushing Rod Clutch	1	
12	100202960	70离合器通油管	Oil Tube	1	附件
13	100202963	70离合器通油导管弹簧	Oil Thimble Spring	1	附件
14	100202965	S125脚离合器通油导管	Oil Thimble	1	附件
15	100010667	轴承 (6001)	BeaRing, 6001	1	附件
16	100010978-0001	GB819. 2螺钉M5×12 (兰白锌)	Screw, M5×12	4	附件
17	100103372	S125脚离合器端盖	End Cover Clutch	1	附件
18	100100513	70离合器锁紧螺母	Lock Nut Clutch	1	附件
19	100103343	70离合器碟形垫圈	Dish Washer, Clutch	1	附件
20	100103330	70离合器止退垫圈	Stop Washer, Clutch	1	附件
21	100104612	70离合器端盖密封垫	Gasket, End Cover	1	
22	100090045	70从动齿组合 (2#)	Driven Gear Comp	1	
23	100103657	70主轴齿轮卡圈	Circlip	1	
24	100203240	70主动齿组合	Driven Gear	1	
25	100103480	70主动齿	Primary Drive Gear	1	
26	100103511	70主动齿轮轴套	Axle Sleeve	1	
27	100203056	70离合器从动摩擦片	Outer Friction Disk A	1	



机油泵部件 OIL PUMP

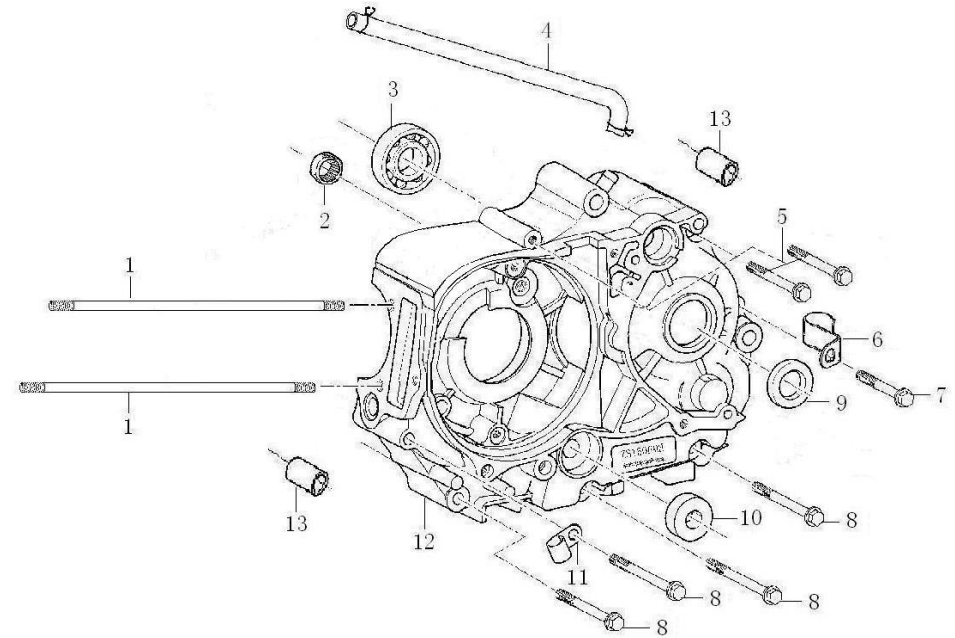
序号 NO.	编码 (PART CODE)	中文名称 (CHINESE DESCRIPTION)	英文名称 (ENGLISH DESCRIPTION)	数量 QTY	备注 REMARK
1	100104951	70机油泵传动链轮组合	Hub Dump Chain Sprocket Oil Pump	1	
2	100104914	70机油泵链轮轴	Oil Pump Sprocket Shaft	1	
3	100104916	70机油泵链轮轴套	Bush Sprocket	1	
4	100104601	70机油泵体密封垫	Gasket Oil Pump	1	
5	100100150	C100机油泵油泵轴	Shaft Oil Pump	1	
6	100204571	70机油泵内转子	Inner Rotor Oil Pump	1	
7	100204598	70机油泵外转子	Outer Rotor Oil Pump	1	
8	100204539	70机油泵体	Oil Pump Body	1	
9	100100159	C100机油泵盖板	Oil Pump Cover	1	
10	100010953-0001	GB818螺钉M5×10(兰白锌)	Screw, M5×10	3	
11	100031854-0002	GB823螺钉M6×22(兰白锌)	Screw, M6×22	1	
12	100031852-0005	GB823螺钉M6×16(兰白锌)	Screw, M6×16	2	
13	100100029	70机油泵部件	Oil Pump Assy	1	
14	100104941	70机油过滤网组合	Strainer Oil Filter	1	



机油泵部件
OIL PUMP

左曲轴箱 LEFT CRANKCASE

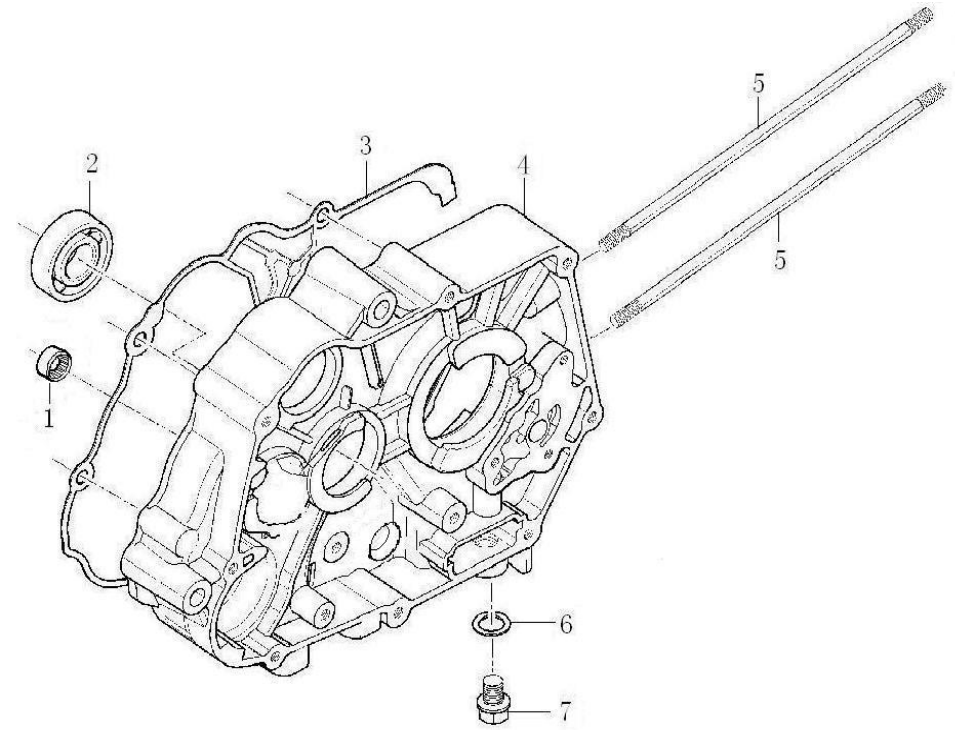
序号 NO.	编码 (PART CODE)	中文名称 (CHINESE DESCRIPTION)	英文名称 (ENGLISH DESCRIPTION)	数量 QTY	备注 REMARK
1	100100228	70气缸双头螺栓A(196mm)	Cylinder Stud Bolt A	2	
2	100300820	轴承(NK13.5×22×12_滚针)	Needle BeaRing, (Nk13.5×22×12)	1	
3	100010678	轴承(6203)	Bearing, 6203	1	
4	100102973	C100通气管组件(2# 复合层材料 φ10.5卡簧2个)	Pipe Assy	1	
5	100011542-0001	GB16674小盘螺栓M6×60(兰白锌)	Bolt, M6×60	2	
6	100100000-0005	70高压线固定夹(兰白锌)	Clip High Voltage Wire	1	
7	100011540-0007	GB16674小盘螺栓M6×50(兰白锌)	Bolt, M6×50	1	
8	100011543-0001	GB16674小盘螺栓M6×65(兰白锌)	Bolt, M6×65	4	
9	100104694	70副轴油封(17×29×5_丁腈胶)	Oil Seal 17×29×5	1	
10	100104645	70换挡臂油封(11.6×24×10_丁腈胶)	Oil Seal 11.6×24×10	1	
11	100102915-0005	70溢流管夹(兰白锌)	Clip Overflow Pipe	1	
12	100102933-0011	90左曲轴箱组合(2# 小挂 有缺 新公差主轴孔 8801)	Left Crankcase Block	1	
13	100010557	定位销 φ10×14	Pin, φ10×14	2	



左曲轴箱
LEFT CRANKCASE

右曲轴箱 RIGHT CRANKCASE

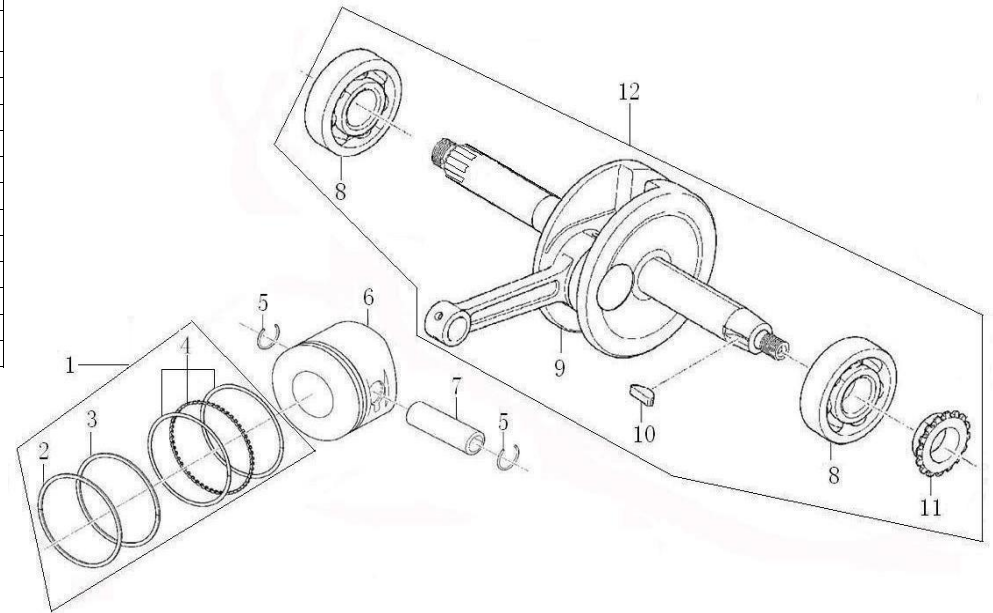
序号 NO.	编码 (PART CODE)	中文名称 (CHINESE DESCRIPTION)	英文名称 (ENGLISH DESCRIPTION)	数量 QTY	备注 REMARK
1	100300820	轴承 (NK13.5×22×12 滚针)	Needle BeaRing, (NK13.5×22×12)	1	
2	100010678	轴承 (6203)	Bearing, 6203	1	
3	100104581	70曲轴箱密封垫	Gasket Crankcase	1	
4	100206056-0014	90右曲轴箱组合 (2# 小挂 新公差副轴孔 8801)	Right Crankcase Block	1	
5	100100286	70气缸双头螺栓B (188mm)	Cylinder Stud Bolt B	2	
6	100106548	平垫圈 (Φ 12.1×2×Φ 20)	Washer, Φ 12.1×2×Φ 20	1	
7	100100331-0006	CG125D放油螺塞 (兰白锌)	Oil Drain Plug	1	



右曲轴箱
RIGHT CRANKCASE

曲轴连杆部件/活塞 CRANKSHAFT CONNECTING-ROD ASSY/PISTON

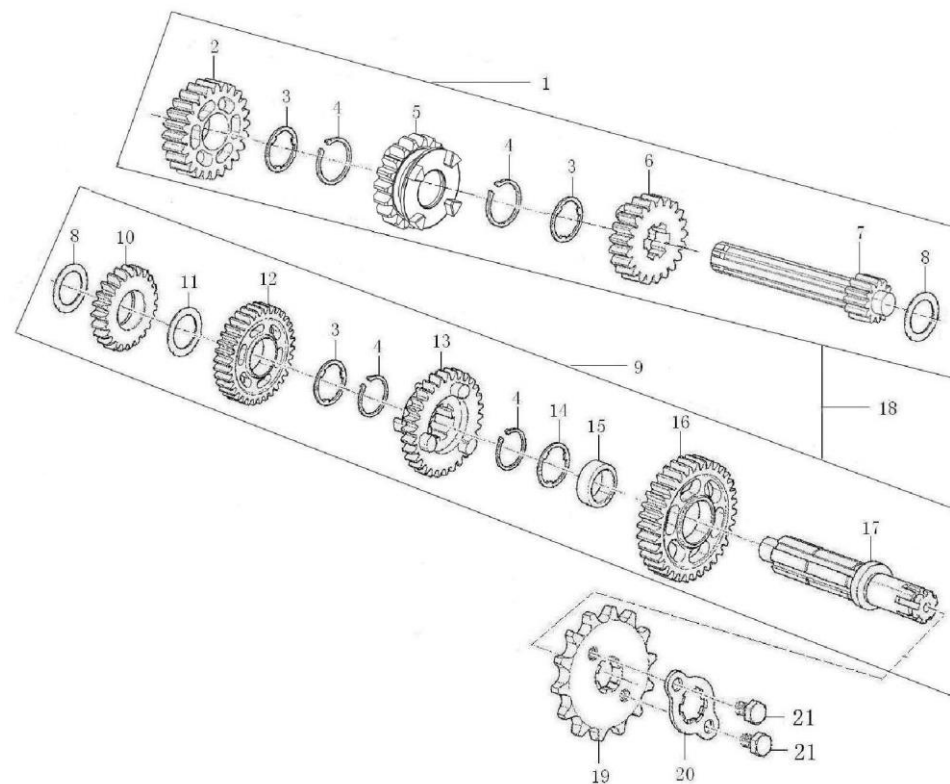
序号 NO.	编码 (PART CODE)	中文名称 (CHINESE DESCRIPTION)	英文名称 (ENGLISH DESCRIPTION)	数量 QTY	备注 REMARK
1	100101572	70改50脚活塞环总成	Piston Ring, Comp	1	
2	100206366	70改50脚活塞环一	Piston Ring, 1	1	
3	100206430	70改50脚活塞环二	Piston Ring, 2	1	
4	100206490	70改50脚油环组合	Oil Ring, Assy	1	
5	100100580	70活塞销挡圈	Check Ring Piston Pin	2	
6	100101336	70改50脚活塞	Piston	1	
7	100101501	70改50脚活塞销	Pin, Piston	1	
8	100010685	轴承 (6304)	BeaRing, (6304)	2	
9	100207044	70曲轴连杆组合 (无轴承 无主动齿 无半圆键)	Connecting Rod Comp 3	1	
10	100100639	70半圆键 (4×12.5)	Semicircular Key	1	
11	100101952	70正时主动链轮 (14齿)	Hub Dump Chain Sprocket	1	
12	100206787	70曲轴连杆部件	Crankshaft Connecting-Rod Assy	1	



曲轴连杆部件/活塞
CRANKSHAFT CONNECTING-ROD ASSY/PISTON

主副轴组合 TRANSMISSION MAIN, COUNTER SHAFT

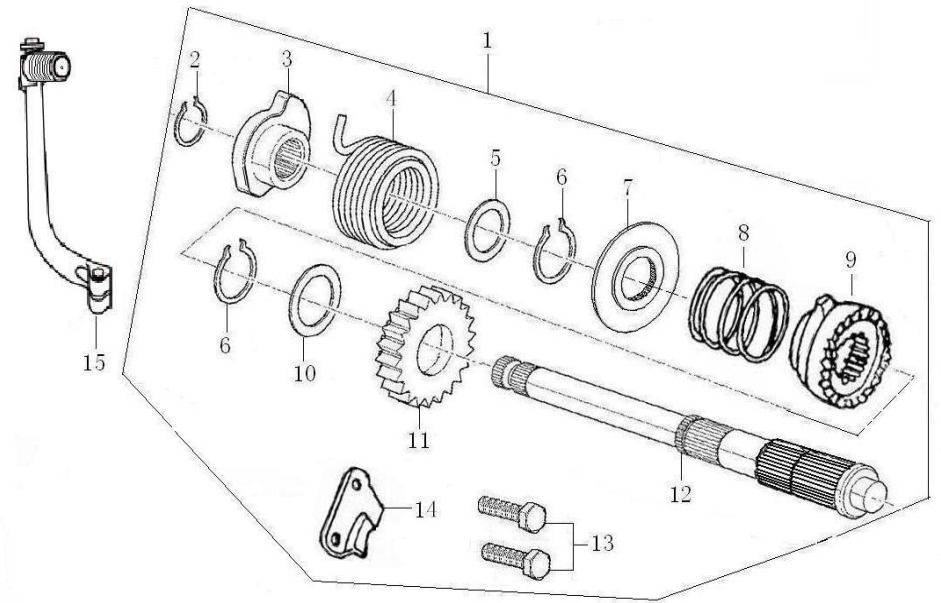
序号 NO.	编码 (PART CODE)	中文名称 (CHINESE DESCRIPTION)	英文名称 (ENGLISH DESCRIPTION)	数量 QTY	备注 REMARK
1	100203415	70改50脚主轴组合(新轴径状态)	Main Shaft Transmission	1	
2	100103595	70改50脚主轴4档齿轮	Gear M-4	1	
3	100103645	70主副轴齿轮隔圈(15.5(17.2)×1.2×21)	Washer, 15.5(17.2)×1.2×21	3	
4	100103657	70主轴齿轮卡圈	Circlip	4	
5	100103594	70改50脚主轴3档齿轮	Gear M-3	1	
6	100103596	70主轴2档齿轮	Gear M-2	1	
7	100203458	70主轴芯轴(新轴径状态)	Transmission Main Shaft	1	
8	100106401	平垫圈(φ13.7×0.5×φ26)	Washer, φ13.7×0.5×φ26	2	
9	100203521	70改50脚副轴组合	Countershaft Transmission	1	
10	100103699	70改50脚副轴4档齿轮	Gear C-4	1	
11	100106451	平垫圈(φ17.2×1×φ26 弹簧钢)	Washer, φ17.2×1×φ26	1	
12	100103698	70改50脚副轴3档齿轮	Gear C-3	1	
13	100103701	70副轴2档齿轮	Gear C-2	1	
14	100203474	70副轴齿轮隔圈(15.5(17.2)×1.2×23)	Washer, 15.5(17.2)×1.2×23	1	
15	100103775	70副轴齿轮轴套	Collar	1	
16	100103700	70副轴1档齿轮	Gear C-1	1	
17	100203587	70副轴芯轴(副轴117.1)	Transmission Counter Shaft	1	
18	100203264	70改50脚主副轴组合(8# 新轴径状态)	Transmission Main Counter Shaft	1	
19	100103800	C100主动链轮(428.14)	Drive Sprocket	1	
20	100203657	70主动链轮固定板	Fixing Plate Drive Sprocket	1	
21	100031911-0004	GB5783螺栓M6×10(兰白锌)	Bolt, M6×10	2	



主副轴组合
TRANSMISSION MAIN, COUNTER SHAFT

启动轴总成 KICK STARTING SHAFT ASSEMBLY

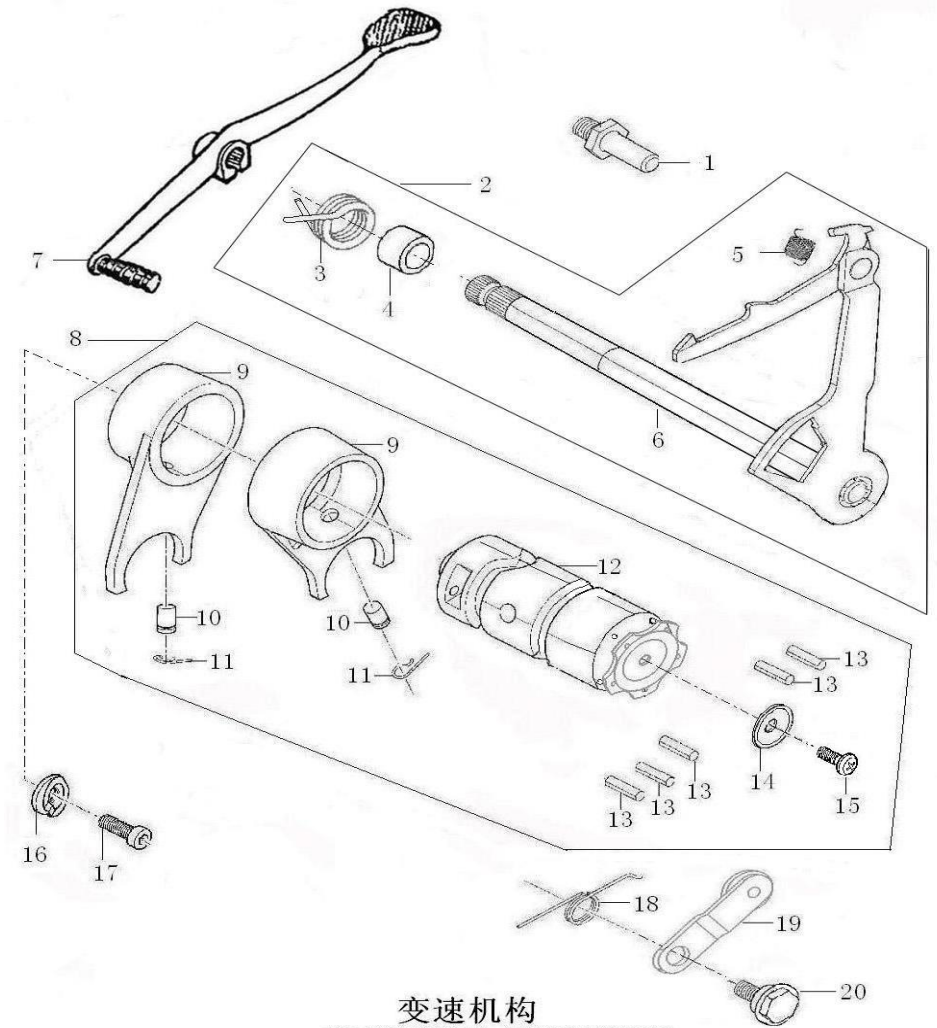
序号 NO.	编码 (PART CODE)	中文名称 (CHINESE DESCRIPTION)	英文名称 (ENGLISH DESCRIPTION)	数量 QTY	备注 REMARK
1	100105710	70启动轴总成(199.5)	Kick Starting Shaft Assembly	1	
2	100100595	70启动轴挡圈(φ15.5×1.2×φ19)	Circli, φ15.5×1.2×φ19	1	附件
3	100105736	70启动轴弹簧座	Seat SpRing, Kick Starting Shaft	1	附件
4	100105744	70启动轴复位弹簧	Return SpRing, Kick Starting Shaft	1	附件
5	100106518	平垫圈(φ17.2×1×φ24)	Washer, φ17.2×1×φ24	1	附件
6	100100596	70启动轴挡圈(φ18.5×1.2×φ22.1)	Circli, φ18.5×1.2×φ22.1	2	
7	100105790	70弹簧承座	SpRing, Support	1	
8	100105786	70启动棘轮弹簧	SpRing, Kick Starting Ratchet Wheel	1	
9	100105780	70启动棘轮	Starting Ratchet	1	
10	100106527	平垫圈(φ20.2×1×φ27)	Washer, φ20.2×1×φ27	1	
11	100105765	70启动齿轮	Gear Kick Starter	1	
12	100105750	70启动轴芯轴(199.5)	Pivot Kick Starting Shaft	1	
13	100011174-0004	GB5783螺栓M6×20(兰白锌)	Bolt, M6×20	2	附件
14	100105759	70启动轴定位板	Space Ratchet Wheel	1	附件
15	100303369	90启动杆部件(QD-2)白铬	Start-Up Bar Comp	1	



启动轴总成
KICK STARTING SHAFT ASSEMBLY

变速机构 GEARSHIFT MECHANISM

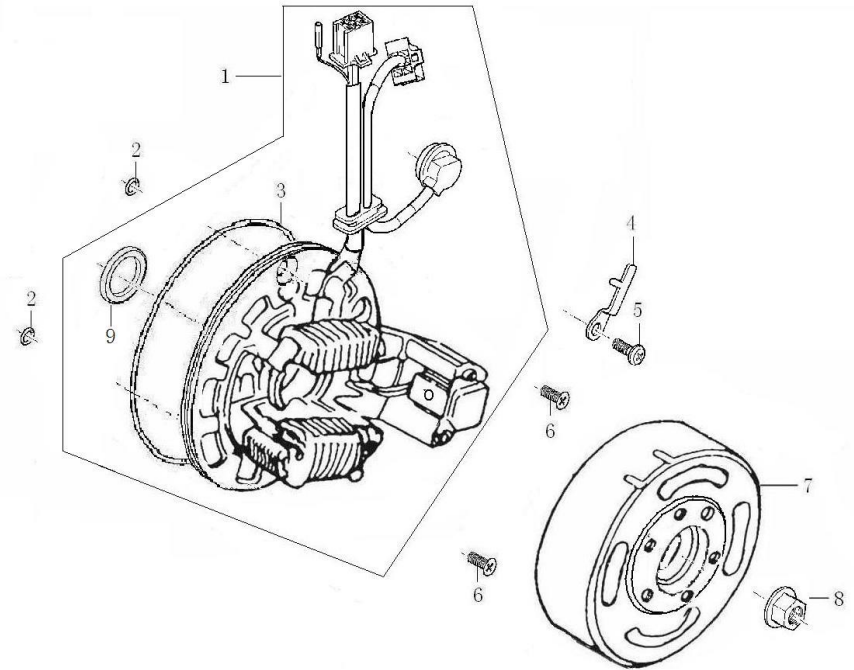
序号 NO.	编码 (PART CODE)	中文名称 (CHINESE DESCRIPTION)	英文名称 (ENGLISH DESCRIPTION)	数量 QTY	备注 REMARK
1	100100392	70变档臂定位螺栓8×11	Bolt Return Springn Fixing,8×11	1	
2	100203861	70换档臂部件(四档循环档_161)	Gearshift Lever Comp	1	
3	100103969	70换档回位弹簧	Return Spring	1	
4	100104000	70换档臂臂体轴套	Sleeve Of Gearshift Lever Comp	1	
5	100103996	70换档臂拉簧	Gearshift Lever Tension Spring	1	
6	100203905	70换档轴组合(四档循环档_161)	Gearshift Shaft Comp	1	
7	100203979	W100变速踏板部件(BT-2)白铬	Gearshift Shaft	1	
8	100203765	70改50脚变速鼓部件(四档循环档)	Gearshift Drum Comp	1	
9	100203712	70改50脚变速拨叉	Gearshift Fork	2	
10	100103891	70导向销	Guide Pin	2	
11	100103892	70弹簧夹	Clip, Spring	2	
12	100103951	70变速鼓(四档循环档)	Gearshift Drum	1	
13	100100901	圆柱销 φ4×13	Pin φ4×13	5	
14	100103950	70变速鼓定位盘	Shift Drum Locating Plate Group	1	
15	100031841-0005	GB820螺钉M6×20(兰白锌)	Screw, M6×20	1	
16	100104486	C100档显动触头	Contact Cearindication	1	
17	100100464-0001	C100档显镙钉(彩锌)	Screw	1	
18	100203929	70定位板弹簧	SpRing, Locating Plate	1	
19	100203955	70定位板组合	Locating Plate Assy	1	
20	100100386	70档位定位板螺栓	Bolt Fixing Plate	1	



变速机构
GEARSHIFT MECHANISM

磁电机总成 MAGNETO COMP

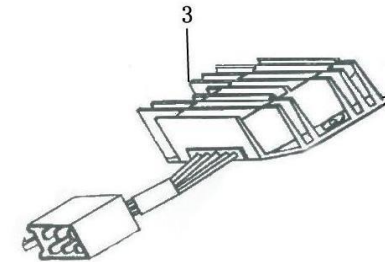
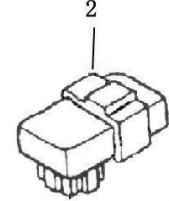
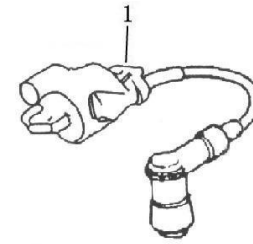
序号 NO.	编码 (PART CODE)	中文名称 (CHINESE DESCRIPTION)	英文名称 (ENGLISH DESCRIPTION)	数量 QTY	备注 REMARK
1	100204954-0001	90磁电机定子组合(12V4极 半波交流 接口11 L:340 带四档循环档显线)	Stator Assy Magneto	1	
2	100107798	O型圈 (φ 6.5×1.8 丙烯酸酯)	O-Ring, φ 6.5×1.8	2	
3	100107648	O型圈 (φ 106.8×2 丙烯酸酯)	O-Ring, φ 106.8×2	1	
4	100104485	C100档位开关固定板(长压板)	Gearshift Switch Pressing Plate	1	
5	100031851-0004	GB823螺钉M6×12(兰白锌)	Screw, M6×12	1	
6	100123471-0001	GB819.2螺钉M6×16(兰白锌)	Screw, M6×16	2	
7	100205175	90磁电机转子组合(4极)	Rotor Assy Magneto	1	
8	100204698-0001	70磁电机螺母(改进型 兰白锌)	Nut	1	
9	100104782	C100链轮油封(19×30×5 氯化丁腈)	Oil Seal 19×30×5	1	



磁电机总成
MAGNETO COMP

电 器 件 ELECTRIC

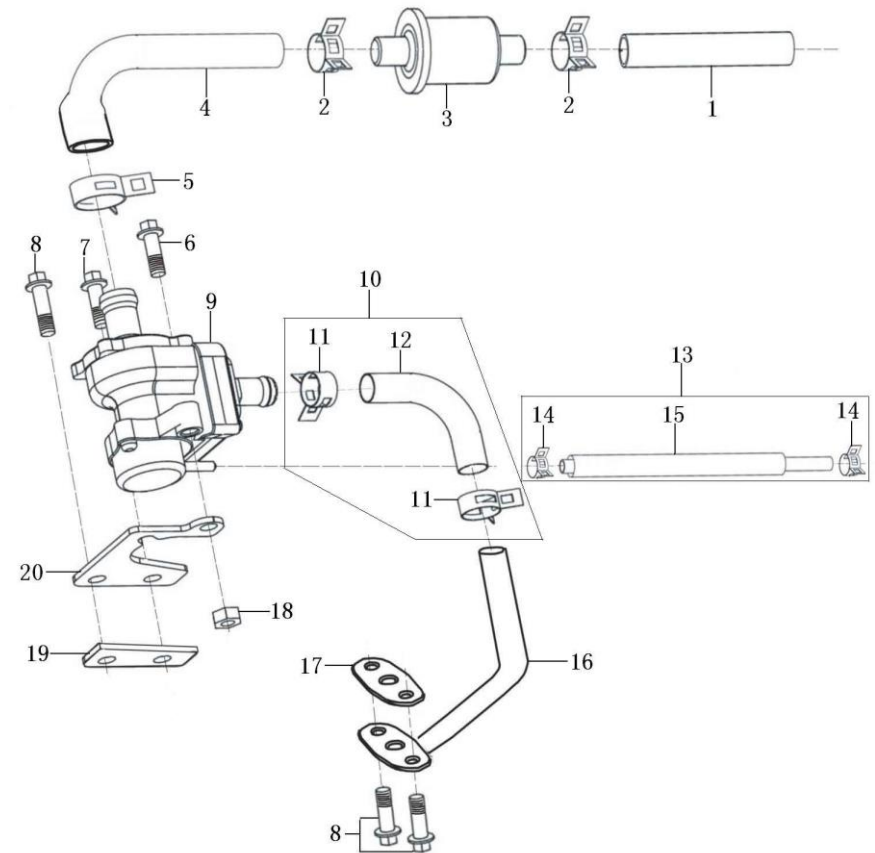
序号 NO.	编码 (PART CODE)	中文名称 (CHINESE DESCRIPTION)	英文名称 (ENGLISH DESCRIPTION)	数量 QTY	备注 REMARK
1	100204256-0001	高压包 (MG01A L:500)	Ignition Coil	1	
2	100204310	点火器 (MD100)	C. D. I	1	
3	100104318	整流调压器 (MT12V6-ZS02)	Rectifier	1	



电 器 件 ELECTRIC

废气再循环系统 EXHAUST GAS RECIRCULATION SYSTEM

序号 NO.	编码 (PART CODE)	中文名称 (CHINESE DESCRIPTION)	英文名称 (ENGLISH DESCRIPTION)	数量 QTY	备注 REMARK
1	100105388	C100二次空滤器连接胶管 I	Connecting Pipe	1	
2	100105402	CG125D二次空滤器连接胶管卡圈 (14)	Hoop	2	
3	100105406	CG125D二次空滤器部件	Sec. Air Box Valve	1	
4	100105392	CG125D二次空滤器连接胶管 I (14×9×230(35))	Connecting Pipe	1	
5	100105403	CG125D二次空滤器连接胶管卡圈 (15.3)	Hoop	1	
6	100011531-0007	GB16674小盘螺栓M6×18(兰白锌)	Bolt, M6×18	1	
7	100011534-0002	GB16674小盘螺栓M6×25(兰白锌)	Bolt, M6×25	1	
8	100055589-0006	GB16674小盘螺栓M6×16(兰白锌)	Bolt, M6×16	3	
9	100201350	C100空气泵(带防尘胶套)	Gas Pump	1	
10	100201424	C100废气循环橡胶管组件 I (58×58)	Rubber Pipe	1	
11	100105484	CG125D废气循环管 I 卡箍	Clamp	2	
12	100201424	C100废气循环橡胶管组件 I (58×58)	Rubber Pipe	1	
13	100201431	CG125D废气循环橡胶管组件 II (1#_φ9×φ4×300)	Rubber Pipe	1	
14	100105485	CG125D废气循环管 II 卡箍	Clamp	2	
15	100105468	CG125D废气循环橡胶管 II (φ9×φ4×300)	Rubber Pipe	1	
16	100201373-0001	C100废气循环铁管组合(3# 电泳黑)	Iron Pipe	1	
17	100104640	PW70废气循环铁管纸垫	Paper Gasket	1	
18	100011452-0003	GB6177.1螺母M6(兰白锌)	Nut, M6	1	
19	100208926	CG125D二次空气泵支架隔热垫	Insulating Gasket	1	
20	100201342-0001	CG125D空气泵支架板(彩锌)	Gas Pump Plate	1	



废气再循环系统
EXHAUST GAS RECIRCULATION SYSTEM